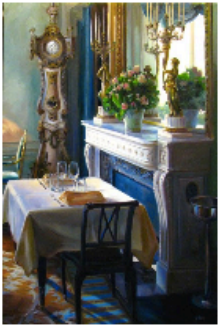


Lindsay Goodwin

Return to Grandeur November 28 ~ December 31, 2014



Clock in the Salon, London O/C 32" x 21"



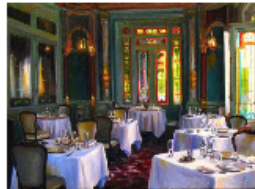
Gilt and Shadows in Late Afternoon O/C 9' x 12"



Clearing Away the Breakfast Things O/C 11" x 14"



Antiquity of La Penelope, Paris O/C 24" x 18"



Stained Glass of Le Grand Barrois O/C 12" x 16"



Table View of the Sunset over Provence O/C 18" x 25"



Curving Lane on Ile de Re, France O/C 8" x 10"



Dappled Light in Provence, Musée des Oliviers O/C 29" x 21"

ELLA WALTON RICHARDSON | FINE ART

58 Broad Street Charleston, SC 843.722.3660 www.ellarichardson.com

[Table of Contents](#)

Carolina Arts, December 2014 - Page 7

Ella Walton Richardson Fine Art in Charleston, SC, Offers Works by Lindsay Goodwin

Ella Walton Richardson Fine Art in Charleston, SC, is presenting *Return to Grandeur*, featuring works by Lindsay Goodwin, on view through Dec. 31, 2014.

Goodwin brings Parisian splendor to Charleston just in time for the holiday season in this new exhibition of oil paintings presented by Ella Walton Richardson Fine Art. Goodwin is internationally recognized for her detailed French interiors of such ornate Parisian locations as Ladurée and the Château de Breteuil and this show continues her luxurious legacy.

Born and raised in Topanga, CA, Goodwin began studying classical

methods of painting at O'Neill's Fine Art Studio in Malibu. She attended the Academy of Art University in San Francisco, where she became a student of Craig Nelson who taught her rapid oil studies that she incorporates in her work to this day. Namely, she utilizes the Alla Prima method, in which she paints new colors on her canvas before allowing the previous to dry. The technique allows for extraordinary hue and texture possibilities, and a tight deadline to finish works.

Goodwin was named as one of the "Top 21 Artists under 31" by *Southwest* continued on Page 10

[Table of C](#)

Ella Walton Richardson Fine Art

continued from Page 9

Art magazine in their September 2005 issue and has been featured in *American Art Collector*, *Plein Air* magazine, and the *San Francisco Chronicle*.

Just a few months ago, Goodwin gave birth to her second son in France, where she resides half of the year. In the midst of taking care of her new bundle of joy, Goodwin keeps up her artistic pursuits with unwavering focus. Her newest works range from her signature ornate interiors to provincial scenes and cathedrals in France. In *Return to Grandeur*, Goodwin continues her quest for moments of "spontaneous Romanticism," encapsulating luxury and timeless elegance that will not soon fade.



Work by Lindsey Goodwin

For further information check our SC Commercial Gallery listings, call the gallery at 843/722.3660 or e-mail to (ella@ellarichardson.com).